



SAQA MA/RI Regional Newsletter

April 2020

I hope you are well. These are unexpectedly very difficult times. Usually we share news about art quilt shows, workshops, exhibitions, and meetings with no consideration to anything else happening. We can no longer do that. We all have to make changes and find new ways that can work for us. It is time to get creative about how we do things. And so SAQA is also making changes and we will probably be making more over the coming months.

We have a fabulous panel discussion planned for our June 6 meeting (details below). I am determined that we have this meeting and so we have two plans; one at Franklin Mills, and if that is not possible, a Zoom meeting. Zoom is really much easier than you might think. We also have support from SAQA. From the SAQA website you can search for Zoom and find out more.

<http://www.saqa.com/members.php?ID=3529>

Our Flight of Ideas exhibition is currently at the New Bedford Public Library, but the library is closed. On May 1st Flight of Ideas is scheduled to move to the Mashpee Public Library. Our Exhibition Committee is looking for new venues for September and later.

I am hoping life is nearly back to normal by our September meeting. We have two fabulous workshops planned at ProChem in Fall River, a full day workshop given by June House on Friday September 11 and a half day workshop given by Anna Lisa Sorensen on Saturday September 12. Details follow.

So read this April newsletter and let's all try to think outside the box!

Next MA/RI Regional Meetings:

Bring your bag lunch and a Show & Tell to share. Meetings are **10 AM to 2 PM** unless otherwise stated. Guests are always welcome.

Next Meeting Saturday, June 6, 2020 - Franklin Mills Fabric Store
305 Union St, Franklin, MA 02038

The panel discussions "Working in a Series," "Finding Your Artistic Voice," and "Building Confidence." will be 10 AM to noon. We will then break for a short lunch and then resume with our business meeting and Show-and-Tell.

I am thrilled that we have four amazing SAQA MA/RI members who will be our panelists; Karen Pulaski, Lee Sproul, Valerie Maser-Flanagan, and Julie Neu.

We will start off with some planned discussion and then you will have an opportunity to ask questions. If group meetings are prohibited we can have this discussion using Zoom. I think these are great topics and great panelists!

Friday, Sept 11, 2020 EXPLORING MONOPRINTING with June House, at PRO Chem Fall River, MA

** Cost is \$75 plus supplies paid to ProChem the day of the workshop. Checks payable to SAQA and mailed to Sue Bates will reserve your spot in this workshop. There is room for only ten participants and will be filled in order of receipt of check. Contact Sue for more information Sueoftheglen@gmail.com 401- 862-3032 (c)

This full-day workshop will cover all steps involved in monoprinting with MX dyes, including setting up the work space; preparing dye and soda ash solutions; printing, and finishing the fabrics. Students will start out working with one color on layer-cake size fabrics to get familiar with the way the tools, dyes, and fabric work together, and the steps required to get a good print. You will quickly move on to working larger, combining tools, colors, and techniques to get a wide range of artistic effects. By noon you will have tried a variety of dye application methods and mark-making techniques, and the afternoon will be devoted to production. You can expect to print about 6 yards of printed fabric over the course of the day. Participants will be provided with information about purchasing and prepping their fabric at home prior to class.

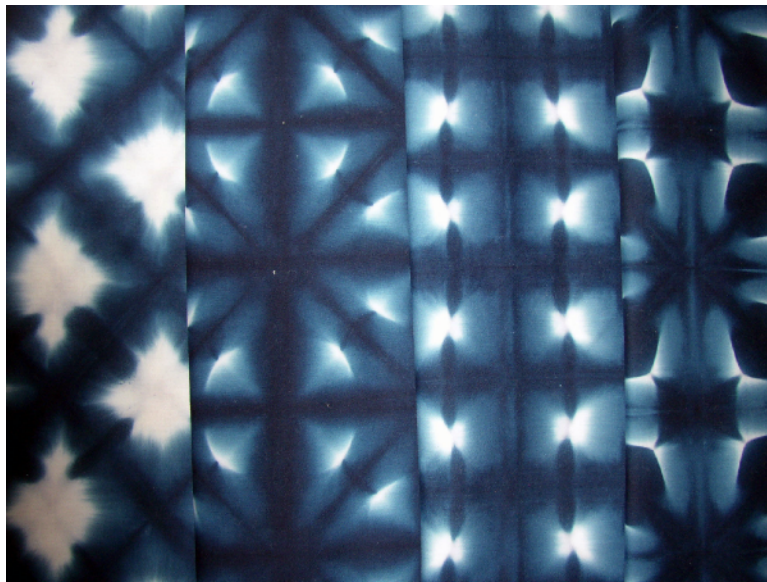


Sept. 12, 2020 Classic Blue Itajime Shibori- ProChem in Fall River, MA Half day workshop by Anna Lisa Sorensen followed by meeting. The cost is \$25 plus supplies fee paid to ProChem. Checks payable to SAQA and mailed to Sue Bates will reserve your spot in this workshop. There is room for only 14 participants and will be filled in order of receipt of check. Contact Sue for more information Sueoftheglen@gmail.com 401- 862-3032 (c)

Anna Lisa Sorensen is an artisan and designer specializing in Shibori techniques. Her work features modern interpretations of this traditional art form. She has over thirty years of

experience designing textiles within the garment industry and in her own artwork using MX dyes.

Our September 12 9 AM to 12 noon workshop will introduce 3 variations of Japanese Itajime folding techniques and a variety of clamping methods used to create repeating patterns. To begin, rice paper will be provided for students to familiarize themselves with the folding, clamping and dyeing methods and provide visual feedback prior to working on fabric. Once students have established an understanding of the methods they will move onto using them to cotton fabric. Each student will have the opportunity to produce 3 18" x 22" individual patterns in a deep blue color using MX dye. Our participants will be provided with 6 clamps to experiment with and bring home for further use. You will also be provided with information regarding purchasing and prepping your own fabric at home prior to class.



We want to hear from you! What would you like our next topic to be? Let Sue Bates at Sueoftheglen@gmail.com or Rebecca Szetela at createsewingstudio@gmail.com know!! Thanks for your input.

MA/RI Regional Exhibits

SAQA MA/RI 2nd Regional Trunk Show: Flight of Ideas

Our quilts will be exhibited at the **New Bedford Public Library until the end of April**. In May, our quilts will be shown at the Mashpee Public Library. We have been keeping a visitors book and the comments have been wonderful! Many have commented that the show is providing

them with a whole new perspective of what quilts can be. If you would like to have the quilts exhibited at a venue in your area and you are willing to serve as local coordinator, please contact Elaine Hickey, Exhibition Chairperson at ehickey1202@gmail.com.

Call for Entry to our next Regional Exhibit - Edges.

Our juried show, “Edges” will open for online entry on June 22, 2020 until July 21st, 2020. The Prospectus is available at our website.

Juror: Anastasia Azure

September 2, 2019: Call for entry

June 22, 2020: Online entry opens

July 21, 2020: Online entry deadline at 11:59 pm EST

August 18, 2020: Notification of acceptance (All notifications will be sent via email)

September 30, 2020: Additional images due if requested for catalog

December 14, 2020: Accepted artwork delivery date

The exhibit will open at New England Quilt Museum in January, 2021 and move to Highfield Hall in April 2021.

Theme: We encounter many edges in our lives - the edge between water and land, land and sky, day and night, fall and winter, hope and discouragement. We can equally live on the edge, negotiating a path between difficult options or exploring life to its limits. <http://www.saqa.com/calendar-detail.php?ID=6638>

Artists are invited to explore and present their own interpretation of the theme, “Edges”.

MEMBER NEWS

News from SAQA (our parent organization) Ebb and Flow Exhibit

35 quilts from all over the world were accepted into the Ebb and Flow Exhibit. Four are from our MA/RI region. Congratulations!

Carol Anne Grotrian - Wave: Montana de Oro

Wen Redmond - Three Feathers Remain

Jeanne Sisson - Breathe

Leslie W. Vieth. - Rise from the Ashes

From Jeanne Sisson

Breathe, 40x36", 2020

My parents signed me up for swimming lessons when I was 5 where I learned to turn onto my back and float. I've always been good at it. Now, years later, I spend summers on a beautiful large lake. During my daily swims, my favorite thing to do is float. Surrounded by the cool crystal water, buoyant and almost weightless, with my ears submerged, noises are muffled. Things become distant. Thoughts recede. The bubbling sound of water and my breath is all I hear, and I disappear from reality for a while.

Fuji Silk Broadcloth, thickened MX dye, acrylic paint, felt backing, a variety of sewing threads.

Multiple monotype prints on Fuji silk broadcloth with MX dye, multiple monotype prints with acrylic paint, backed with felt and hand stitched.



From Leslie Vieth



From Wen Redmond

The pleasure of composition in the 21st century tool is combining digital photography, manipulation in Photoshop or the many App's available to create a new medium of digital fiber art. An interpretation of what is unseen into a visual work.

For Three Feather Remains, a photograph of painted and torn papers was digitally fused with second photograph of a glass disk. The photograph was cropped, adjusted, printed, quilted, painted and cut into segments creating an interior grid design. Each segment is sealed with paint and hand-tied together. A variety of mediums, and bonded tissue paper compliment the stitching highlights of the completed work.

Techniques- Manipulated photograph of painted torn paper scraps, printed, quilted, and cut into segments creating an interior design. Piece highlighted with mediums and tissue paper, edges sealed with paint, and hand-tied.

Materials Digital Silk Noil, paint, tissue paper, glass bead, lava, matt and gloss mediums, pearl cotton & thread. 42 x 33

From Carol Anne Grotrian -

35"x30" whole cloth indigo shibori, hand quilted



Other news from Carol Anne Grotrian

The first of March I did ship 3 quilts to Mayo Clinic in Jacksonville, FL--a diptych and one 6 foot long. The images have been posted on Facebook. I've now had the good fortune to make a total of 7 quilts for Mayo Clinic in the last two years.

News from Diane Cadrain

I am now vice president and publicist for Connecticut Women Artists.

With a group of four other members of Connecticut Women Artists, I recently participated in a fiber art show, Thread Count, at Hartford Fine Art and Framing, 90 Pitkin St., East Hartford. The other artists, who, like me, are members of both SAQA and Connecticut Women Artists, are Clara Nartey, Judy Ross, Cathy Smith, and Kate Themel. We had a festive opening reception, and several of us conducted well-attended demonstration days. I'm happy to say that I sold seven of the fourteen pieces I submitted for that show.

I recently won the prize of Best Landscape in Show, at Through Your Eyes, an exhibit of the Cape Cod Art Association, for my felted landscape, Connecticut's Charter Oak, after Frederic Church.

I've recently had two pieces accepted into SAQA's Rails,Roads, and Rivers, and one accepted into Connecticut Women Artists' Members Juried Show. But who knows what will happen with those shows?



MA/RI Regional Blog

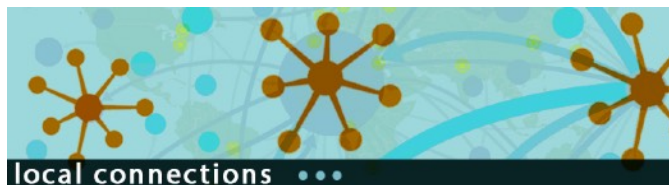
Contact Sue Bates (sueoftheglen@gmail.com) to submit information. The blog reaches an audience wider than just our email, so it is a great way to connect with people outside of SAQA to build your audience <http://ma-ri-saqa.blogspot.com>.

The blog is a wonderful way to introduce yourself to the region if you are new. Who doesn't love seeing photos of other artist's studio and works-in-progress? Give us news and photos of your exhibited artwork. Share your successes. Tell us about classes or workshops that you have planned.

MA/RI Facebook Page



The SAQA MA/RI Facebook page is a closed page, only used and seen by members of SAQA MA/RI (including members who choose us as their second region). To join go to Facebook (<https://www.facebook.com/search>) and enter “SAQA MA/RI Members” in your search box and click the join box on the page. This is a great place to get feedback on pieces you are working on, to announce exhibits you are taking part in, or get a group together for an outing



Note that the two PODs that meet in person will not be meeting during this time. If you are interested please contact the POD leader by email. The Zoom Crit Group will continue as usual.

~ Cape Cod Pod ~

Meets the first Thursday of the month, 11 am - 1 pm, at **Tumbleweeds Quilt Shop**, www.tumbleweedquilts.com, 1919 Main St, Barnstable, MA Contact Jane Ashbrook for more information at jane.ashbrook@yahoo.com

The Southeast Stitchers POD ~

The Southeast Stitchers share work, offer advice and feedback, generate new ideas, and are a great support to each other. There is a lot of variety in the work presented. We would love to invite new members to join us in a fun and positive experience. We are ready for new ideas and new members to make our group even better. Contact Margaret at mamcgrath27@gmail.com to visit us.

The SAQA MA/RI Crit Group ~

We began a virtual critique group using Zoom in January and will continue to meet the first Wednesday evening of the month 7:30 to 8:30 PM. The benefits are regular zoom meetings with MA/RI SAQA members to get a gentle critique and feedback, answer questions and discuss art quilts in general with no travel time involved. You need a working computer and willingness to use Zoom (it is free). Please email Sue Bates Sueoftheglen@gmail.com if you are interested in joining.

All members are welcome to go to these Critique and POD meetings. If you are interested in joining or forming a group, please speak with Rebecca Szetela (createsewingstudio@gmail.com) or Sue Bates (suebates@cox.net).

This is a great time to share on our Blog or Facebook page anything creative that you have been working on during this unique time: Any art form or inspiration or information.

Our special comment or tip at the end of our newsletter this month is from Carol Anne Grotrian. Carol Anne has 7 of her quilts at various Mayo Clinic locations.

“I value commissions not just for money but for the opportunity to put art quilts on walls, especially in waiting rooms where they are healing.”

Thank you all for the amazing creative support of this community!

Susan Bates
MA/RI Regional Representative
Studio Art Quilt Associates

Sueoftheglen@gmail.com

401- 862-3032 (c)

Rebecca Szetela
MA/RI Regional Representative
Studio Art Quilt Associates

Rebecca@createsew.com

508-320-5475

www.createsew.com